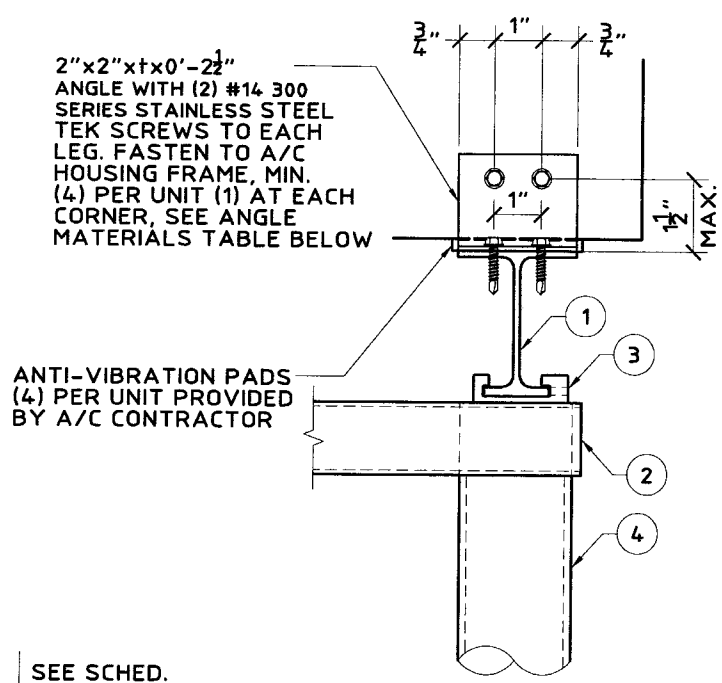
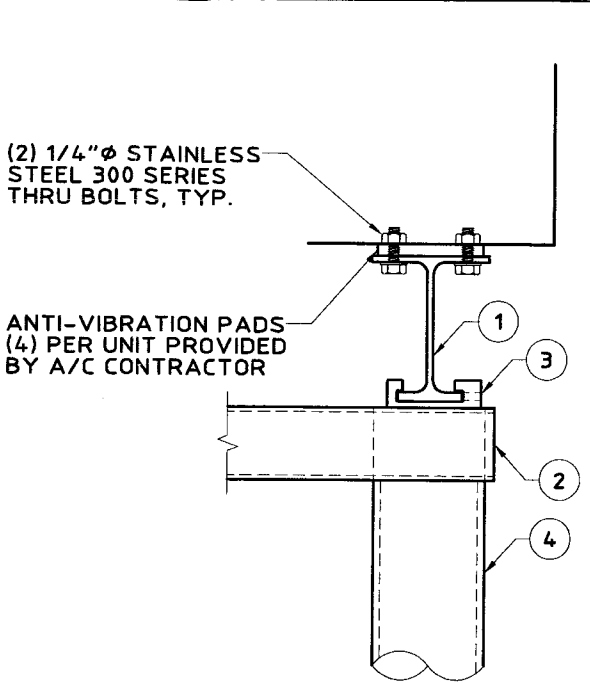


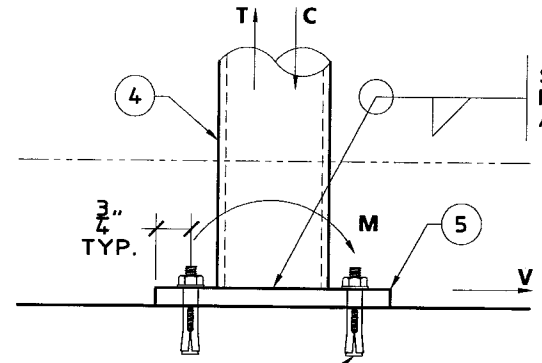
B FRAME ASSEMBLY DETAIL
SCALE: 3" = 1'-0"



C A/C UNIT CONNECTION TO FRAMING 1
SCALE: 3" = 1'-0"



D A/C UNIT CONNECTION TO FRAMING 2
SCALE: 3" = 1'-0"



F BASE PLATE REACTION DIAGRAM
SCALE: 3" = 1'-0"

SEE SCHED. FOR FILLER ALLOY & SIZE

ANGLE MATERIALS				
	t (IN.)	ALUM. ALLOY 6063-T6	ASTM A653 GRADE 50	STAINLESS STEEL 303
ASSEMBLY NO.	1,2&3	0.125"	0.100"	0.125"
	4,5,6&7	0.1875"	0.130"	0.1875"

ASSEMBLY NO.	AC UNIT HxWxD	FRAME TYPE	POST SIZE		TUBE SIZE WxHxt (inxinxin)	BASE PLATE (BxBxt)	MAX. DESIGN WIND PRESSURE (PSF)		MAX STD HEIGHT (in)	UNIT WT (lbs)	MAX. SUPPORT REACTIONS			
			O.D. (in)	t (in)			BASE PLATE WELD TYPE 4043-1/4	BASE PLATE WELD TYPE 4043-3/8 OR 5183-1/4			T (lbs)	C (lbs)	V (lbs)	M (lb-in)
			1	24x24x24			C	1.75			0.065	2.03x1.4x0.050	4x4x1/4	76
	24x24x24	C	1.75	0.065	2.03x1.4x0.050	4x4x1/4	61	61	24	200	159	335	134	1684
	24x24x24	C	1.75	0.065	2.03x1.4x0.050	4x4x1/4	49	49	30	200	137	313	108	1686
2	24x24x24	A	1.75	0.065	2.03x1.4x0.050	5x5x1/4	78	78	18.5	200	189	365	172	1659
	24x24x24	A	1.75	0.065	2.03x1.4x0.050	5x5x1/4	61	61	24	200	159	335	134	1684
	24x24x24	A	1.75	0.065	2.03x1.4x0.050	5x5x1/4	49	49	30	200	137	313	108	1686
3	24x24x24	B	1.75	0.08	2.03x1.4x0.050	5x5x1/4	86	86	18.5	200	206	382	189	1968
	24x24x24	B	1.75	0.08	2.03x1.4x0.050	5x5x1/4	70	70	24	200	182	358	154	2066
	24x24x24	B	1.75	0.08	2.03x1.4x0.050	5x5x1/4	56	56	30	200	157	333	123	2046
4	36x30x30	D-1	2	0.100	2.5x1.5x0.093	5x5x5/16	57	64	24	300	430	622	240	3058
	36x30x30	D-1	2	0.100	2.5x1.5x0.093	5x5x5/16	46	54	30	300	393	585	203	3210
	36x30x30	D-1	2	0.100	2.5x1.5x0.093	5x5x5/16	39	46	36	300	360	552	173	3266
5	36x30x30	D-2	2	0.125	2.5x1.5x0.093	5x5x3/8	57	80	24	300	555	747	300	3823
	36x30x30	D-2	2	0.125	2.5x1.5x0.093	5x5x3/8	46	65	30	300	488	680	244	3864
	36x30x30	D-2	2	0.125	2.5x1.5x0.093	5x5x3/8	39	55	36	300	445	637	206	3905
6	40x30x30	E	2.375	0.154	3.0x1.5x0.093	5x5x3/8	62	71	24	300	588	788	308	4276
	40x30x30	E	2.375	0.154	3.0x1.5x0.093	5x5x3/8	51	60	30	300	536	736	260	4463
	40x30x30	E	2.375	0.154	3.0x1.5x0.093	5x5x3/8	43	52	36	300	500	700	226	4587
7	40x40x40	E	2.375	0.154	3.0x1.5x0.093	5x5x3/8	61	70	24	300	612	765	311	4317
	40x40x40	E	2.375	0.154	3.0x1.5x0.093	5x5x3/8	50	59	30	300	558	712	262	4493
	40x40x40	E	2.375	0.154	3.0x1.5x0.093	5x5x3/8	42	51	36	300	520	674	226	4607

BASE PLATE SIZE	EXISTING STRUCTURE	ANCHOR SCHEDULE			
		T	C	V	M
4"x4"x1/4" & 5"x5"x1/4"	CONCRETE	(4) 5/16"Ø POWERS LOK BOLTS WITH 1-1/2" MIN. EMBEDMENT IN CONCRETE AND 3-3/4" MIN. EDGE DIST. TO MIN. 3 KSI CONCRETE.			
5"x5"x5/16"	CONCRETE	(4) 3/8"Ø POWERS LOK/BOLT SLEEVE ANCHORS WITH 1-5/8" MIN. EMBEDMENT IN CONCRETE & 4-1/2" MIN. EDGE DIST. TO MIN. 3 KSI CONCRETE.			
5"x5"x3/8"	CONCRETE	(4) 1/2"Ø POWERS LOK/BOLT SLEEVE ANCHORS WITH 2-1/4" MIN. EMBEDMENT IN CONCRETE & 5" MIN. EDGE DIST. TO MIN. 3 KSI CONCRETE.			
4"x4"x1/4" & 5"x5"x1/4"	WOOD	(4) 3/8"Ø STAINLESS STEEL LAG SCREW WITH 2" MIN. EMBEDMENT IN WOOD FRAMING BEYOND PLYWOOD & MIN. 1" EDGE DIST.			
5"x5"x5/16" & 5"x5"x3/8"	STEEL	(4) #12-14 ITW BUILDDEX TEK-SELF DRILLING FASTENERS WITH BONDED WASHER. FASTEN DIRECTLY TO EXIST. STEEL MEMBERS, NOT THRU METAL DECK OR ROOFING.			
4"x4"x1/4" & 5"x5"x1/4"	WOOD	(4) 3/8"Ø STAINLESS STEEL LAG SCREW WITH 3-1/2" MIN. EMBEDMENT IN WOOD FRAMING BEYOND PLYWOOD & MIN. 1" EDGE DIST.			
5"x5"x5/16" & 5"x5"x3/8"	STEEL	(4) 3/8"Ø A307 GALVANIZED BOLTS WITH NUT & WASHER. FASTEN DIRECTLY TO EXIST. STEEL MEMBERS, NOT THRU METAL DECK OR ROOFING.			

NOTE:
A FLORIDA REGISTERED ENGINEER SHALL VERIFY THAT THE EXISTING STRUCTURE IS CAPABLE OF RESISTING THE LOADS IMPOSED SHOWN IN THE FRAME SCHEDULE. DO NOT ATTACH TO STEEL JOISTS WITHOUT COORDINATING WITH JOIST MANUFACTURER OR APPROVAL OF PROFESSIONAL ENGINEER.

PRODUCT RENEWED
as complying with the Florida Building Code
Acceptance No. 07-0516.04
Expiration Date 09/05/2012
By: *Heber A. Nelson*
Professional Engineer
Division

Thornton Tomasetti
330 N. Andrews Ave., Suite 450 • Ft. Lauderdale, FL 33301
T 954.522.3690 • F 954.522.3691 • COA # 7519
Website: www.ThorntonTomasetti.com
Copyright © 2007 Thornton Tomasetti, Inc.

AIR CONDITIONING STAND
ALUMINUM & VIBRA-DAMP CORPORATION OF AMERICA
3350 BURGESS ROAD FT. LAUDERDALE, FL 33314
(954) 584-6001 (800) 266-7212

J.W. Knezevich
Professional Engineer
FL License No.: PE 0041961

MAX 02 2007

no.	date	by	description
0	05/02/2007	TLF	PREVIOUSLY DRAWING NO. 03-378

date 05/02/2007
scale AS NOTED
design by TLF
checked by VJK
drawing no. 07-369
sheet 2 of 3